

Townsville and District Beekeepers Association (Inc)



PO Box 1115, Aitkenvale QLD 4814

www.beesnorth.com.au

Newsletter No 2, March 2023

In this Issue

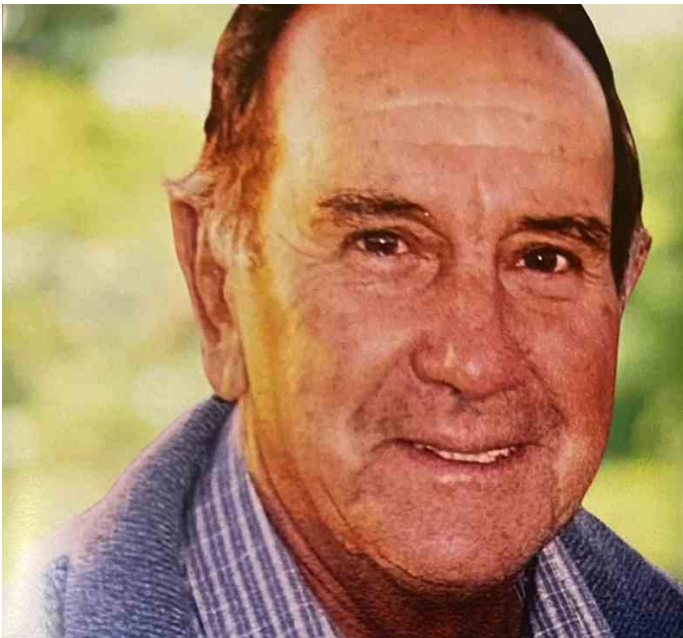
- Tom Ruddell
- Biosecurity and varroa
- Not bees but!.... Burr Comb, Many eggs, Narrow escape
- How it works -the sting.
- Library News
- New members in Uganda
- TDBAI Club officials
- Bees on the Internet, bee trivia.
- Q&A new idea?
- Shop prices : <http://www.beesnorth.com.au>

Next Meeting:

Sunday, 19 March@10 am
Michael Hooper Park, Deeragun

Bring a chair and something to share at morning tea.
Tea, coffee, milk, sugar, cups, hot water will be available.
Free chats with experienced and novice beekeepers are available after the meeting
The Club Shop will usually open 1st Saturday of the month.
Please check the website for details

Tom Ruddell



It is with immense sadness we have to celebrate the life of Tom Ruddell who passed away on the 26th of February 2023.

“He was always good for a chat and was inquisitive.

He liked shop days he could pull up a chair with Jon and have a good chat.

He was a carpenter, started at Proserpine sugar mill and then moved to Townsville

To finish his trade.

Moved back to Ayr and was hand cutting cane in the season & building houses in the Off.

He was building steel sheds from Normanton Hughenden down to Mackay.

Loved his caravanning & fishing & his last years was his bees.”

Tom's nieces

Tom loved fishing and beekeeping. He kept bees for over 50 years and often ‘hosted’ hives at his relatives’ homes. Tom loved to observe his girls and even when he became wheelchair bound, he would have Joan wheel him out onto the back yard so that he could enjoy the antics of his girls.

Tom was a stalwart of the Bee Club. Tom and Joan attended most meetings and events, participating and helping out to their full capacity. The club was made better by the membership of Tom. They will be sorely missed. Thank you for your help and support Tom, and we look forward to supporting Joan in any way we can and we look forward to sharing with her at future meetings.



Give us a call on **0459 810 628** to discuss how you can help to meet your General Biosecurity Obligation for testing and reporting.

Autumn hive testing...

From Rog Winton, of Biosecurity Queensland

Welcome all to the New Year, it's the Year of the Wabbit.

January and February are done and dusted, and we are into March already. Hence, I'm submitting this article into your newsletter in time for Autumn (ie Now, April, May).

In December's newsletter I outlined updated National Bee Pest Surveillance Program (NBPSP) requirements for ongoing community hive testing in Townsville post National Varroa Mite Eradication Program (NVMEP).

I mentioned that during our eradication program (for *Varroa jacobsoni* on Asian honeybees) there was a heightened level of interest to test beehives in our community and that many Townsville beekeepers were included within this long-term testing regime. This requirement remains, however rather than a 6-week testing cycle, we are now required to test community hives twice a year during Spring and Autumn. By community hives, I mean European honeybee hives belonging to registered beekeepers, rather than just the six sentinel hives which are located in vicinity of the Port of Townsville.

With Autumn fast approaching, we need to start requesting testing your hives for pest and disease, including varroa mites. For reporting and recording purposes, Biosecurity Queensland (BQ) is required to submit samples for verification for Queensland's declarations of area freedom. This is very important in light of NSW Varroa mite (*Varroa destructor*) situation. In order to fulfil BQ's requirements under the NBPSP Autumn milestone, I am requesting 20 samples from tests conducted from around the greater Townsville area.

Testing can be done by way of alcohol washes, drone uncapping, sugar shakes. Sticky mat testing can be done for those who have a BQ distributed bottom box (with adapted sticky mat tray) or hive boxes that have a beetle base sliding tray trap system. Sticky mat treatment will be a chemical free. I have a supply of sticky mats for these tests which are available upon request. I can assist with those that are wanting to test their hives and happy to demonstrate techniques learnt from the NVMEP. Please give me a call on **0459 810 628** to discuss how you can help to meet your General Biosecurity Obligation for testing and reporting. If you do your own testing, then please also give me a call to arrange a collection of filter paper(s) from your sugar shake or alcohol wash.

I will be contacting our sentinel hive owners soon to arrange for another round of sentinel hive testing. I would like to take this opportunity to publicly thank these owners (Steven, Lindsay, Sonia, Ruth & Clare) plus a few other beekeepers in the Port of Townsville vicinity (Bill, John, Davey, Diana, Taryn & Ira) who make their hives available for testing. Your ongoing assistance is greatly appreciated, but I now need to call upon other beekeepers from within Townsville suburbs to undertake their hive testing to meet our/your requirements/obligations for best-practice biosecurity.

Following the detection of varroa in NSW, this also serves as a timely reminder that beekeepers should be inspecting their hives every 16 weeks and reporting their results via the Bee123 [survey form](#). It is vitally important that beekeepers report all negative test results and not just when they suspect something is wrong. This negative data is essentially for showing the effort that your industry is going to and helps us provide evidence that Townsville is free of varroa and other bee pests and diseases.

Thanks everyone.

Rog from BQ.

Update on the current situation in New South Wales -116 infected hives

<https://www.dpi.nsw.gov.au/varroa>

Penalties for illegally moving hives can be up to \$1.1 million or imprisonment for 3 years!

Ed. Still concerned about the lack of information of wild feral hives. Situation reported on the 18th February 2023



Varroa mite (tick) on a drone pupae (Taiwan)

Not bees, but related insects that you see when out walking

A nectar and pollen collecting fly, and bee eating spiders.

The old Ed has been on holidays for a few months and has brought in the highly acclaimed Dr John Carr the assistant stand in for the March Newsletter.

See below for some of the interesting insects spotted by the honored Ed while out walking.

The photo at right is of a Golden headed Rutilia Fly (*Rutilia argentifera*)

https://www.brisbaneinsects.com/brisbane_tachinids/GoldenHeadRutiliaFly3%20.htm

No, it is not a bee, despite eating nectar and collecting pollen, it is still in the blowfly family, but a good looking one at that. It favours eucalyptus flowers, and rests on the sunny side of trunks head down, about a meter from the ground. Some of its relatives are parasites of scarab beetle larvae,.....yew! as they say. They lay their eggs in larval grubs and consume all the good yummy juices before emerging as a blowfly – cute.



Below are photographs of orb weaver spiders (possibly arabesque orb weavers

<https://spiderzrule.com/garden-orb-weavers/>) that have caught honey bees in their webs.

There were hundreds of these spiders with bees in their webs along a track in Tasmania that had flowering leptospermums, heaths and other wildflowers around. The bees were out in full force, but they were getting caught out by the numerous webs strung across the trails.



Burr comb bonanza

Alan Ziegenfusz and Jon McKinstry took some time out to help The Ed with his hives while he was away. This is what 4 weeks of 5 missing frames in a 10 frame box looks like. The instructions to my apprentice were obviously misunderstood – put the 5 frame nuc into the 10 frame box along with 5 blank wax foundation frames. Ah well, as long as the queen is still in there somewhere.



New books in the library

The excellent book on *Varrroa* management is hopefully not to be required reading, but the library gets us prepared.

The carpenters in the club might want to try some of the hive design books we have.

Feeding bees is always interesting specially to help our guys through rainy seasons.



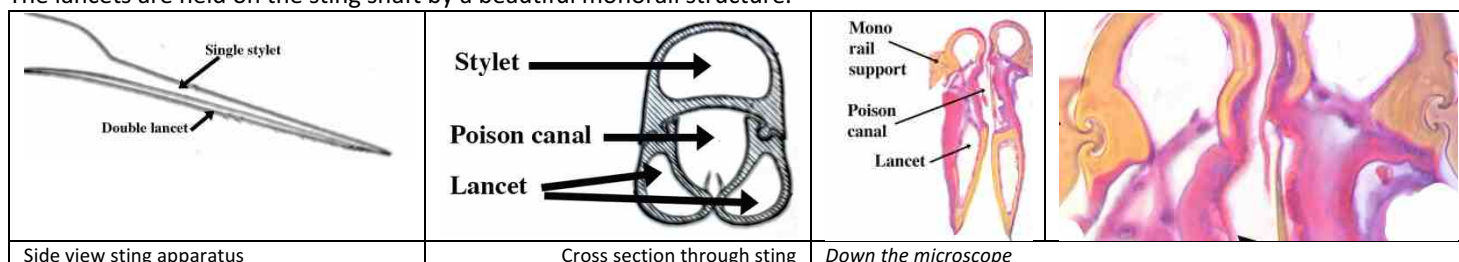
How it works! The sting lancets

While our stingless bee queen has a sting the worker's bite. But be grateful we are not farming *Apis dorsata* in Townsville – its sting is 3mm long (*Apis mellifera* 2mm) and I can assure you size does matter!

The sting is made of one stylet with a tapered sharp point and suspended underneath are two lancets, which have a barbed ends.

These barbs hold the sting in place and with the movement of each lancet, the sting apparatus goes deeper and deeper into the beekeeper and the poison flows in between the lancets in the poison canal.

The lancets are held on the sting shaft by a beautiful monorail structure.



A near escape



With the recent rain, some strong winds and thunderstorms it brought down a large heavy palm nut cluster weighing 40kg bounced off the ed native oath box. Fortunately, the roof diverted the cluster harmless onto the ground which is now covered in ripe palm oils. The bee hotel was less lucky, but no one was home so no harm done.

Talking of bee hotels keep the date!

We are again going to be making bee hotels for the Ecosophy Garden May 19 2023 for the Townsville community and the beekeepers open day in the city on World Bee Day (20th of May) with events leading up to the sustainability house open day on Sunday May 28th 2023. The core message is to encourage the community to do three simple things to support our Bees.

- Plant Bee-friendly flowers, herbs, and trees.
- Be aware of soil health and pesticide aware.
- Install a Bee hotel - The community can collect their Bee Hotel from various locations, including Men's Sheds, High Schools, and Flexi Learning.

Too many eggs in a cell? Should we worry?



When a beekeeper introduces a strong, productive queen into a small brood area, nuc for example, the queen's egg output may exceed the smaller colony's ability to provide space. The queen may then place two or more eggs per cell. But, in this case, all eggs are fertile, and the colony is in no danger of collapse. The extra cells are either eaten or moved by nurse bees in the next couple of days. Note the egg does not hatch for 3 days. But beeee concerned when you find multiple 4-6 eggs in a hive which is becoming restless. Find the queen. When the queen dies, and the hive does not realise for 3-4 days the nurse bees may not be able to rescue the hive by creating a queen from a fertile egg.

The eggs produced by the few workers who can develop their ovaries are always infertile and only create drones (males).

New club member in Uganda

Being fortunate to visit Uganda over Christmas, beekeepers always seem to congregate together and are some of the most welcoming people. Stopping at the Queen Elizabeth National Park a visit to the Lake Katwe Sub-county United Beekeepers Association was called upon. Bees are significant in Uganda's drive to resolve economic problems associated with the poverty levels that leads to encroachment and poaching of wildlife, social conflicts and low levels of education among the youth, food insecurity.

The local beekeepers also double as conservationists around the Kasese district. The association provides awareness to communities about alternative sources of income, food security and wildlife resources collaborative management other than the continuous human wildlife conflicts which had threatened the local communities-park management collaborative relations.

Townsville Beekeepers are proud to be associated with the Katwe bee association to assist the people of Uganda with such a valuable food resource and educational opportunity afforded by bee keeping. The newsletter is considered by the Uganda clubs as a valuable resource for information and education.



Kenyan top box in Uganda



Traditional tree cattle dung and matting hive

Bees on The Internet

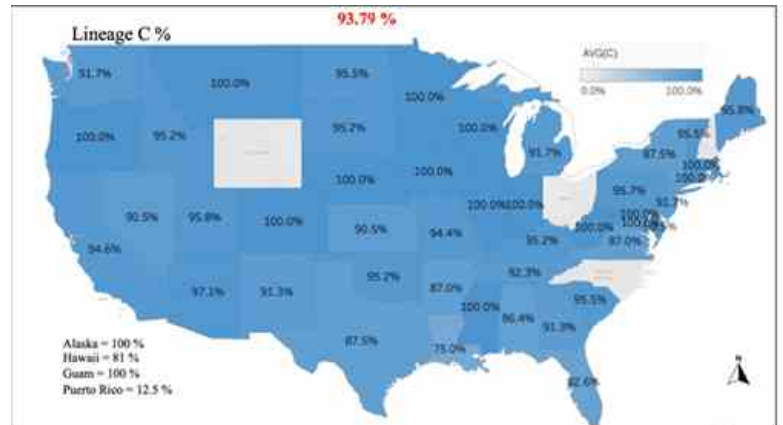
1. 94% of USA honeybees belong to one genetic lineage.

<https://content.govdelivery.com/accounts/USDAARS/bulletins/349057d>

The data showed that the nation's managed honey bee populations rely intensively on a single honey bee evolutionary lineage. In fact, 94 percent of U.S. honey bees belonged to the North Mediterranean C lineage. Data reflected that the remainder of genetic diversity belongs to the West Mediterranean M lineage (3%) and the African A lineage (3%).

"It's important that we have a realistic and accurate estimation of the honey bee's genetic diversity because this indicates the insect's ability to respond to disease, adaptation to environment, and productivity," said ARS Research Entomologist Mohamed Alburaki. "Without this pollinator insect, we will witness a drastic decrease in the quantity and quality of our agricultural products such as almonds, apples, melons, cranberries, pumpkins, broccoli and many other fruits and vegetables that we're used to purchasing. We can't wait until a domino effect slowly takes place and affects our food supply."

The lack of genetic diversity creates a vulnerability for U.S. honey bees to survive in shifting climates that are now wetter or drier than usual. There is also concern that a honey bee's inability to fight off disease or parasitic infection could negatively impact beekeeping sustainability. The challenge of U.S. honey bees' weakened immunity has become an economic burden to bee producers and beekeepers. In the past, U.S. beekeepers suffered less honey bee colony losses and treated against varroa mite (a ferocious honey bee parasite) once per year. In 2023, colony losses and winter mortality are at a high peak and varroa mite requires multiple treatments per year to keep it under control.



93.79 percent of U.S. honey bees belonged to the North Mediterranean C lineage. The percentage of this lineage is displayed for each state.

Ed comment: Honey bees (*Apis mellifera*) are not native to the America's and thus the population has originated from a very small genetic pool as shown by the results. Interesting the native Americans know the white man was close because they would see "white man flies" on the flowers in the pariries. Personally, as honey bees originate from the equator the American's climate change may suit the bee more than the current climate.

2. Care by nurse bees could affect future hive temperament and aggression

<https://www.newswise.com/articles/feed-or-fight-how-a-honey-bee-hive-s-culture-influences-their-choice>

Researchers have found that nurses from high-aggression colonies would stop their care when sensing alarm pheromone, whereas nurses from low-aggression colonies would continue their care duties. Westwick's findings suggest that nurse behavior may largely be the way that larvae understand their social environment and later go on to perform similar behaviors as adult nurses or perhaps be more aggressive as foragers.

For Westwick, the next steps in this work are to test whether a simulated interrupted feeding schedule produces adult nurses that act similarly when sensing alarm pheromone. She suspects that disruptions in the feeding schedule create an uncertain environment for the larvae. "This larva might then sense that it would be better prepared for that uncertain world if it is more aggressive and therefore better able to defend itself," she adds. By testing how the nurses in the hive respond to alarm pheromone, Westwick's findings illuminate how changes in early care may be key to adult behaviour.

Q&A.

Who wants a Q+A section in the Newsletter?. If you do, just send me your Q's and I will get a whole lot of A's for you.

I have one for you, and I have even included the Answer., but I would like to hear of some tips from TDBAI Members, and especially some Flow Hive owners.

Well, no one answered, so I will ask it again

Q: When can I harvest honey from the hive?

A: https://www.honeybeesuite.com/when-can-i-harvest-honey-from-a-new-hive/?utm_source=newsletter&utm_medium=email&utm_campaign=news_from_the_hive&utm_term=2023-01-11

From the Club Shop volunteers

Hi Bee Club members

Update - our website is up again, you can place your orders via beesnorth.com.au

Next shop opening is first Saturday of the month.

Location: 3/38 Rendle St, Aitkenvale

Time: 9am - 10:30am

Collection at other time by arrangement and when volunteers are available.

If you experience difficulty accessing the web site for orders, please use the following email address to contact the club for shop purchases and other queries - tsvbeeclub@gmail.com

Remember the Shop etiquette – politeness and patience are key components to success

To all visitors to our Club Shop – please be respectful, patient and polite to our Volunteer shopkeepers. Please arrive with a smile, a dose of patience, and remember your manners.

Email orders will be given priority and serviced – but walk in orders may not be completed.

Pre-order by email before midnight on the Thursday before shop opening

to shop@beesnorth.com.au; please do not send your order to info@beesnorth.com.au



Golden Rules for the Club Shop:

Please follow this guide:

1. Order **AND Pay** by Thursday midnight **before** the opening day, by email: shop@beesnorth.com.au
2. Bring you order number and print out of the request with you
3. Arrive at the Shop **after** 9:00 am, pay for your order, **don't hang around inside the Shop to chat** – too many people inside.
4. Non-emailed or late orders may not get any attention if the Shop is too busy.
5. Please take your purchases and make room for the next shoppers, thanks

Native bee Newsletter – join the group and check out some great info and photos

The CROSS-POLLINATOR - Newsletter of the Australian Native Bee Association

Original articles, new information and news from the world of native bees. The Association has branches in Sydney, Brisbane, Wide Bay and Gladstone, but no Townsville branch?? Are there enough interested native beekeepers to get one “flying”?

Check out these sites: <https://australiannativebee.org.au/>
<https://www.facebook.com/Australian.Native.Bee.Association/>
<https://www.instagram.com/australiannativebeeassociation/>

AGM and Meeting Minutes for February 2023 Meeting

Agenda

1. Park

- - Discussion was around the lease of the toilet. Helen2 mentioned that the Council was doing an audit on parks and the parks were included in this audit, then the toilets will sta. Helene will advocate for the park.
- - Council to invest in a refurb of the toilets.
- - Nick already had a scope of works and all the details were in the scope.
- - There would be no additional cost to the lease.
- - Committee deliberated on the retention of a shower. It was decided that the shower and fittings will stay. If the shower was required later on, it would be reinstated.
- - System would be removed as it was gas.
- - Helene mentioned that the original artwork would be beneficial in remaining, tells the story of the park.
- - Frana mentioned that there was a leak that was outside the property that needed to be sorted. Helene undertook to get this fixed.
- - The toilets were currently not lockable, also to be rectified.
- - Signage for the park was discussed in order to promote the club and to promote the artwork.
- - Helene advised that there was small bucket of money available that could be applied for through Council to provide funding for the signage. This was around \$250 to \$500.

2. Enclosure

- - Enclosure was mooted to be built by members with materials to be purchased/donated from Bunnings – working bee.
- - It was suggested that a formal request be made to encourage the trades to assist with the build, potential use of army or veterans to assist.

3. Website

- - The website was originally created by Mitchell Creations
- - Subsequently is corrupt, with no emails being received.
- - Attempts were made to move to another server, as management costs were escalating,
- - Discussions around moving to a HostGator platform was unsuccessful.
- - Frana advised that Bill will attempt the migration from the current server to HostGator as emails were locked to Mitchell's server.
- - Significant issues with the website and the inability to access emails.
- - Frana will meet with Bill to look at options for the website.
- - Mick proposed to move to Google HostGator as the platform, this was seconded by Miles.
- - Suggestions to also have Beekeeping Etiquette and Guidelines on this website, with links to legislation to ensure beekeepers understand their responsibility as beekeepers.

4. Events

- - The Honey Hut, which is a trailer, required signwriting or even wrapping.
- - Nick to do the artwork.
- - Mick suggested that we could add a Perspex Window to the Hut to enable viewing during a demonstration
- - The Honey Hut would also contain a spinner, potentially the plastic one.

5. Members hives
 - - Neighbours upset about bees entering their home.
 - - All members need to be aware of these issues and they need to be addressed.
 - - Nick mentioned that he would give them a week's leeway and then he would contact them.
 - - There are liability issues with having bees and responsibilities.
 - - As these are active members of the club the club does have a duty of care.
6. Shop items
 - - Frana that a new book called BUZZ has been released and there are a few copies that will be added to the library.
 - - Nick suggested that the club stocks glass jars however an alternative suggestion has been recommended. Glass jars are specifically ordered on request from members. This will alleviate transport costs somewhat.
7. Pests and disease
 - - BEE123 – Mick attempted to log onto the site unsuccessfully.
 - - Confirmed AFB in Cleveland and Belgium Gardens.
 - - Nick to contact Roger and get more information.
 - - Roger will require physical samples – stickies and alcohol samples.
 - - There are sticky mats available.
 - - Varroa is still present.
8. School hives
 - - Frana and Jon are unable to maintain these hives.
 - - Hives are looked after during the school holidays.
 - - Email to all members to find someone else to assist.
 - - Tyre is located at hermit park state school.
9. Workshops And Beginners courses
 - - Mick to hold the courses at his home.
 - - Nick spoke about a visitor from Brazil who had connected with him who has a passion for native bees. Nick excited about having him talk to members.
10. Hive testing and management
 - - To be delivered by John Carr .
 - - Bee anatomy – outstanding class.
11. Events
 - - World Bee Day is May the 20th
 - - 34B a Saturday the 13th to May the 20th
 - - Open day options are Perfume Gardens, Jezzine Barracks, Queens Gardens
 - - Strand Park is a consideration.
 - - Turn around social grants can be applied for to support setup costs around \$5000 available.
 - - The bee hotels were very successful.
 - - Rolling Stone community centre??
 - - B hotels – connect with schools, Vincent state school and Kirwan State High School.
 - - Involving the community into 3 4 bees' pollinators- youth justice assist with planting of gardens.
12. Townsville City Council
 - - Calendar for bee learning.
 - - Sustainability house learning is the 14th of May.
 - - "Our Townsville" Event can be set up on a Saturday, Helene to check with Natalie the event manager.
13. Pollinator garden

Stage two of the gardens, Nick will add another B hotel as well as install a native bee hive in a log.
Continue to involve partners in the garden.
High engagement with community in the garden.
14. Shop
 - New shelving installed in the shop.
15. Pollinator guide
 - - To be published soon.
 - - Will pull all native species together.

New TDBAI Office holders and Committee for 2023

Position	Name	Nominated	Seconded
President	Nick Smith	Alan	Mick
Vice president	Mark Finn	Mick	Beryl
Secretary	Liz Henning	Naomi	Mark
Treasurer	Derek	Mick	Nick
Assistant Treasurer	Frana McKinstry	Ron	Derek
Newsletter Editor	Lindsay Trott	Mick	Nick
Assistant Editor	John Carr	Nick	Ron
Membership Officer	Frana McKinstry	Nick	Mick
Shop Manager	Mick Olsen	Maria	Doris
Shop Assistant	Alan Z	Paul	Liz
Native bees	Nick Smith	BS	MO
Librarian	Beryl Smart	Mark	Naomi
Website/Social Media	Mick Olsen/Nick Smith	Beryl/Liz	Mick/Naomi
Native Bees	Nick Smith	Mick	Naomi
Committee	Miles F	Liz	Doris
Committee	Danny K	Nick	Mick
Committee	Maria F	Naomi	Ron
Committee	Naomi O	Mick	Nick
Committee	Doris N	Derek	Beryl
Committee	Ron N	Nick	Naomi
Committee	Paul P	Mick	Mark

Welcome to our New Members

Existing Club Members are encouraged to assist/mentor our Newbees. They have joined the club to learn about bees, so even if you only have limited experience, give them a hand if you can. Invite a Newbee to your hive opening and discuss what's inside the box, let newbies experience hive openings to become more confident, and you will learn more yourself by trying to explain what's going on in there.

Subscribe to the Bee Aware e-newsletter and stay up to date

The BeeAware newsletter is an e-newsletter for beekeepers and growers of pollinator-reliant crops, or anyone else simply interested in beekeeping or the pollination of crops. Each newsletter contains the latest in news, research and development, as well as upcoming events relating to honey bee biosecurity and the pollination of horticultural and agricultural crops. Townsville features in Issue 52 due to the latest AHB and Varroa incursion.

<https://beeaware.org.au/subscribe-to-newsletter/>

Annual Membership Fees are due in July/August each year - currently \$30/p.a.

Membership fees can be made electronically to:

Name:- Townsville and District Beekeepers Association BSB:- 633000

Account:- 141466078

Refer :- Please make sure you add your Surname so that your membership can be signed off.

Email contacts for the Office Holders 2020/21

You can use these email contacts for the Office Holders, and hopefully they will have figured out how to access them and will respond ASAP.

president@beesnorth.com.au, treasurer@beesnorth.com.au, shop@beesnorth.com.au, editor@beesnorth.com.au

And for all web and membership enquiries : info@beesnorth.com.au

Swarm Contact List:

Please advise editor@beesnorth.com.au if you wish to be removed from this list. Contact me with your name, phone number and suburb if you want to be added to the list.

Kelso/Kirwan: Steve and Carla Kersnovske - 0417 344 419

Douglas/ Gulliver: Sonya Verburgt - 04 0853 0991

Alice River/ Bluewater: Sharene Dougall – 0415426903 Ronelle Nord – 0417752622 Duane Saltmer - 0400 339 508

Amanda Woodcock – 0405784083

Black River through to Rollingstone: Alex Jenkins - 0459472166

Aitkenvale: Pat Dury - mob 0419252829

Charters Towers: Mervyn Yule - 0427 124 126

Swarm List People: Please contact Biosecurity Queensland on 13 25 23 for any swarm or strange bee activity in the Townsville region. For all swarm collections, please collect 300 bees or roughly 10% of brood comb and submit to Biosecurity Queensland for pest and disease monitoring.

Newsletter Editor needs your input – why not tell me your story?

Club Member Profiles

From The Ed.

The Newsletter Editor receives some wonderful stories and photos from some of our Members. And it makes our Newsletter a personal and relevant method of communicating our bee adventures with to all our Members, many of whom cannot get to the meetings or events. Some of these stories are amusing – like The Blooper Series (The Ed seems to feature in a lot of these), Product Reviews, stories from the many events, markets and school visits, information from our more learned members, news about workshops and open days, and so on.

I would like to include this section in the monthly Newsletter and for this to be about a different Club member each month, but it can only happen if at least 1 out of the 400+ members puts pen to paper, takes a snapshot and sends in the info to me at the Newsletter desk.

So, how about giving it a go? You don't even have to think about what to say. You just have to write in and embellish a little, tell me funny stories, successes, failures, problems and what beekeeping means to you. Go for it!! We would love to hear what you have been up to.

The TDBAI has over 400 members at last count.

Surely one or two are prepared to fill in a half page questionnaire and take a photo? If you can't write, and can't take a photo, then give me a call and I will come over for a cuppa and a chat and we will be able to extract a story with you for the rest of our Members enjoyment. Let's keep the Club Member Profile articles for the monthly Newsletter rolling.

CLUB MEMBER PROFILE QUESTIONNAIRE

Here's the questionnaire – fill it out and attach a couple of photos, including one of yourself and send to me [mailto:: trottlindsay@gmail.com](mailto:trottlindsay@gmail.com)

Name /HIN /Suburb /Native or/and European bees / No of hives/area of hive locations?
Type of hives? / Type of foundation? /Beetle protection?
Year commenced beekeeping? /Who was your mentor? /Who is involved in your household? Is anyone allergic/sensitive to stings?
What has been your biggest success? / failure?/ mistake?/ biggest lesson?
What would you do differently if you had to start beekeeping again after a disaster like fire/AFB/Varroa/cyclone
Do you sell/barter/give away honey? How much honey does your average hive produce? Do you make any other products from your hives?
Do you volunteer for the Club at Open days, markets, school events, public displays? Would you like to participate?
Any stories you would like to tell?
Attach photo please?
That's it!!!! Just fill it out and send it to me, and you will be a rock star in the Monthly Newsletter.
Please provide more than just a one word answer!!
The Ed

TDBA Bee Starter Kit - \$160

The Perfect Gift for a budding Beekeeper

Available in Townsville from the Club Shop:

Club Members Price Only! - \$160

Hive tool, brush, vented jacket/veil, gloves, and smoker

Plus: The ABC of Beekeeping book

Contact: shop@beesnorth.com.au



See you at 10am 19th of March at Michael Hopper Park, Deeragun!



NOTES: