

# Townsville and District Beekeepers Association (Inc)



PO Box 1115, Aitkenvale QLD 4814

[www.beesnorth.com.au](http://www.beesnorth.com.au)

Newsletter No 5, June 2022

## In this Issue

- Open Day, Eco Fiesta, school visits - photo wrap up
- Medicinal jarrah honey
- The naughty mason bees of Hornsby Heights
- Leafcutter bees can pollinate
- Simon Wever has worms
- Vale David Turnbull OAM
- Iain Gordon's hives for sale, Beeflow bees and blueberrys
- Club Shop looking for polite customers
- Bees on the Internet, bee trivia stuff,
- Club officials' contacts
- Shop prices : <http://www.beesnorth.com.au>

## Next Meeting

**Sunday, 19 June 2022 10 am**  
**Hooper Park, Deeragun**

Bring a chair and something to share at morning tea.  
Tea, coffee, milk, sugar, cups, hot water will be available.  
Free chats with experienced and novice beekeepers are available  
after the meeting

The Club Shop will usually open 1<sup>st</sup> Saturday of the month.  
Please check the website for details

## TDBAI busy bees out in the Townsville community - Blistering Beeswax Batman, that's hectic

Take a look at this list of events that your hardworking Committee and volunteers have put together in the last month. That's a hectic pace. See the Newsletter for some great photos from President Nick and Dr John from the events.

1. May 4 - Bunnings Northshore - Honey extraction demo
2. Townsville City Council Ecospoly Garden - TDBAI & NQ Native Bees help plant and commission Bee Hotel for garden
3. May 20 - St Benedicts Proppies on World Bee Day - Nick, Frana & Beryl provided an interactive lesson on bees. Commissioned a new Native Bee Hive (Chapel)
4. May 21 - TDBAI Open Day at Michael Hooper Park
5. TDBAI - Michael Hooper Park bee compound goes up with Hutchinson Builders support
6. May 22 - Rowes Bay Sustainability House Open Day - Nick NQ Native Bees
7. May 22 - Toomulla Beach - Frana - Honey extraction demo
8. May 27 - Nick NQ Native Bees recognises National Reconciliation Week. Wulgurukaba language around bees and honey
9. June 5 - Eco Fiesta in Anderson Gardens
10. June 5 - Nick NQ Native Bees commissions art with 1 Step Art - Leroy Whelan from Warrgamay Tribe to tell a story around native bees in traditional culture
11. June 8 - Nick NQ Native Bees - Ryan Catholic College Eco Fest
12. June 8 - Frana - HPSS - Bee Talk Years 5 & 6

## Open Day success

Our club held the annual Open Day on Saturday 21 May at Michael Hooper Park, Deeragun. This event was the first of two weeks of activities in conjunction with TCC, ending with Eco Fiesta on June 5. We highlighted all things bee-related, covering honeybees, stingless bees, and solitary native bees. Congratulations to Frana and the Committee and volunteers who helped out before, and on the day.

## Eco Fiesta success

This year's Eco Fiesta took place on 4 and 5 June 2022 at Anderson Gardens and focused on pollinators and their importance within our community. The Club had native bee display hives, live honeybee displays, honey and products for sale, people to chat to, Dr Kim Prendergast the native and wild bee, wild scientist made a guest appearance.

The weekend also included:

- guest speakers, an education hub with free workshops, live entertainment, delicious line-up of food trucks, fun activities for the kids,
- great range of market and exhibit stalls, free sprinkler swap (must bring old sprinkler to swap, one per household)
- honey, wax, bee products etc for sale



The event celebrated it's 30-year anniversary with a particular focus on bees and included a world record attempt of the Waggle Dance.

This dance is based on Honeybees and the way they communicate in a dance.

Did it succeed?? (Yes)

**Left:** Cr Margie Ryder, Leroy Whelan, Helene James from TCC, Pres Nick Smith  
**Right:** The crowd



# Photos from Eco Fiesta, Open Day, and our other events

Beryl at the craft tent, Nick with honeycomb, Mark at the merch tent



Bee crafts, Doris Newitt selling raffle tickets, Naomi selling her wares



Kids with free give-aways from Bunnings and the Club, Frana's old smoker (no, not Jon), ochre hand printing



Helene James from TCC doing an ochre handprint, a bug in amber, Alan with a full honey frame



Great day out for the family with The Sappers cooking the food, Mick scraping a honey frame, the clear Perspex spinner



Bees eye view of the gardens, kids in a comb, traditional culture lesson about native sugar bag honey



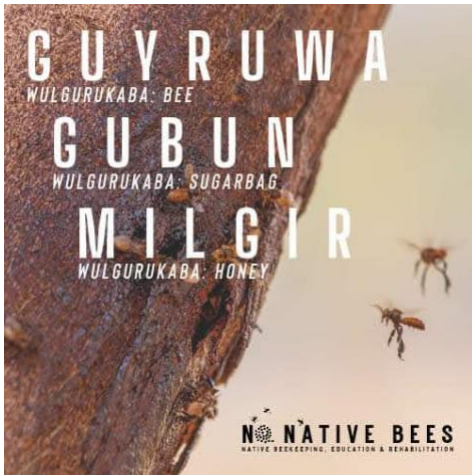
Our new hive compound taking shape at Michael Hooper Park, with assistance from Hutchinson Builders



Cr Margie Ryder and Bee photo bomber Frana, Ian Goulevitch and his Flow Hive Honey, free honey tasting stall



Learning the Wulgurukaba language for bees and native honey, making ochre handprints



Best in Show: Clubbie Sylvia Aworth in uniform Bee face painting on happy kid



**Bee Motels...simple, or.....**

Don't you hate it when the bloke next door puts up a better Xmas lights display than your measly effort. Looks like the same thing is happening with bee motels, seen right. Top pic is a range of Club motels.

When a simple block of wood would suffice.....someone has to go and show off their woodworking skills. Admittedly it does look pretty fancy.



## Active Jarrah honey dramatically improves wound healing

Infected wound on human leg



26 days

Deep ulcer on dog leg



15 days

Jarrah honey has been shown to contain active ingredients that contribute to wound healing, (see RJ Manning, 2011, DPIRD 9-2011). Some of that activity is due to hydrogen peroxide generated by enzymes in the honey, and sometimes there is so much peroxide that bubbles appear in the honey while still on the frames. Peroxide is a great disinfectant but needs to be used in a diluted solution on skin. Jarrah (*Eucalyptus marginata*) is a native eucalyptus tree from SW Western Australia and is now being marketed with a promise that it has higher wound healing properties than manuka honey----- a big call, and likely to get a snappy response from those sensitive Kiwis.

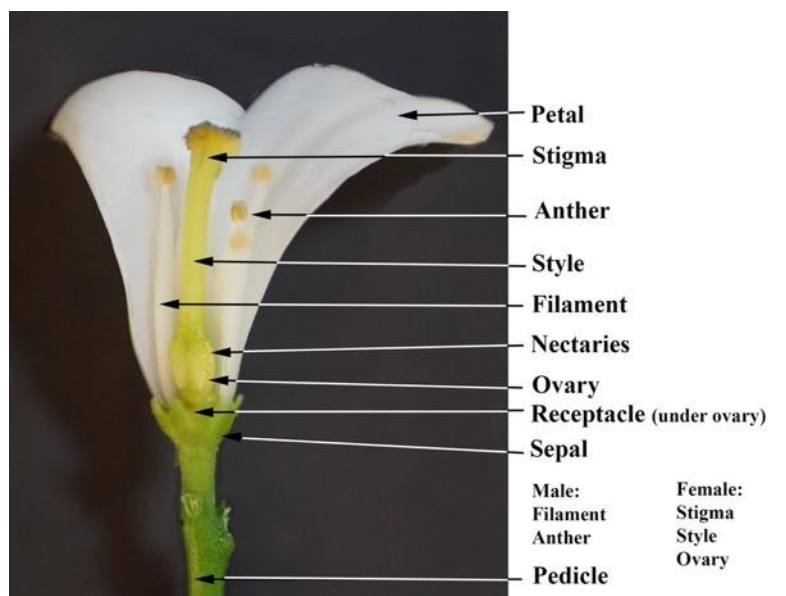


## Remember those flower parts?

Dr John Carr reminds us of those parts of the plant that bees are so interested in. The nectaries are where the nectar is located – pretty obvious, I guess, but that is where all the nectar collecting bees have to get their tongues on to. Some flowers have concealed nectaries that the bees have to pierce before getting access to the sweet stuff. Some bees are too big to get in, or their tongues too short to reach.



Leafcutter bee pollinating a flower



## The Naughty Mason Bees from Hornsby Heights

Story told to The Ed by Jennifer Timewell



Jennifer's mason bees (above), and Eastern Snail Shell Mason Bee (*Osmia conjuncta*) right. [https://en.wikipedia.org/wiki/Mason\\_bee](https://en.wikipedia.org/wiki/Mason_bee)

Jennifer's house in Hornsby Heights, NSW, is in danger of collapsing due to the overzealous activities of a group of mason bees who have taken a real liking to the sandy mortar between her sandstone block house. Not only her house, but her neighbours' house as well. There is something about the texture and chemical composition that has the local bees going absolutely nuts. The only problem is that they are removing so much mortar that the building investigators have given up hope of stopping them and have recommended completely re-mortaring the entire house to prevent it from collapsing. Jennifer's futile attempts at stopping them with a few cans of Mortein have had zero effect.

Mason bees are highly prized in the USA for pollinating blueberry and apple orchards due to the bees high efficiency at pollinating because of their clumsy habits and hairy bodies. The mason bees are considered 95% efficient pollinators in fruit orchards, compared to 5% efficient European honeybees who are less clumsy and less hairy. The mason bees appear to just blunder through the flowers spreading pollen everywhere. Mason bees are even sold to orchardists to improve their harvests.

Unlike honey bees (*Apis*) or bumblebees (*Bombus*), mason bee species are solitary; every female is fertile and makes her own nest, and no worker bees for these species exist. When the bees emerge from their cocoons, the males exit first. The males typically remain near the nests waiting for the females, and some are known to actively extract females from their cocoons. When the females emerge, they mate with one or several males. The males soon die, and within a few days the females begin provisioning their nests which are built using.....you guessed it, mortar. They are frequently metallic green or blue in colour like the one in the photo, although some are black or rust red.

### The Ed.

## Leafcutter Bees are great pollinators

<https://www.beeculture.com/leafcutter-bees/> by Glenn Marangelo

Frana's garden gets a haircut



Have you ever noticed a leaf that looks like someone attacked it with a hole punch?

You, my friend, are in the presence of one of the world's most efficient pollinators: leafcutter bees.

Instead of collecting pollen in "baskets" located on their hind legs like honey bees and bumblebees, leafcutters are a unique family of bees that really dive into their work. For collection, they have a dense mass of branched hairs on the underside of their abdomen, called a scopa.

Leafcutters look like they're belly-surfing a flower. With an energetic, swimming-like motion, they release large amounts of pollen, packing their scopa and giving them a yellow, golden-colored belly. But the pollen falls off easily as they move, making them efficient pollinators, but inefficient foragers. This requires leafcutters to make more foraging trips than other bees — the reason why they are such important pollinators.

Female leafcutters make a tube-like nest of individual cells for each egg they lay, using a natural or artificial cavity like a hollow plant stem or the many tubes of a bee hotel. Each cell is constructed with pieces of leaves or flower petals.

But not just any leaf will do. Leafcutters are picky, looking for leaves with just the right texture and thickness. Once a prime leaf is found, she'll cut a near-circular piece with her jaws, curl the piece in half, and fly back to her nesting site.

So, while you may not visually appreciate the holes in your leaves, the beneficial impacts leafcutters have in pollinating alfalfa, blueberries, squash, melons and other summer vegetables and fruits is certainly worth the tradeoff.



This leafcutter bee nest (total length about 6-8 cm) shows the neatly layered leaf discs.

## **National Bee Pest Surveillance program starts up gain**

TDBAI Club members will be asked to keep an eye out for unusual bees or swarms again and carry out a couple of hive inspections using the old sugar shake or alcohol wash technique. A renewed program will commence soon with Roger Winton from DAF running the show. Most of the methods developed and perfected for detecting Asian honeybees in Townsville region during the previous program will be used. The program will concentrate on areas closer to Townsville Port, where the risk of pest incursion is considered "high".

Don't be alarmed if you see helium balloons drifting around in parks with queen pheromone dubbed onto small containers underneath – these are designed to attract any males hanging around waiting to mate with a virgin queen. And if you see someone with a battery-operated vacuum cleaner sucking up dark pellets in the street, well that's just Roger collecting vomited Rainbow bee eater pellets. Those birds don't digest all the insect wings and bodies they eat, and their pellets are used to identify invasive Asian honeybee wings. The programme will continue with sentinel hives within a few Kms of the Port, and Roger will be doing inspections with the sentinel hive owners, and some others, during the programme.

More details to come, but like all good Boy Scouts – "Be Prepared" and keep an eye on your hives. We have had Asian honeybee here in Townsville already with its own species of Varroa mite which was successfully controlled and eradicated with the cooperation of TDBAI Club members. The uncontrolled Asian honeybee invasion from Cairns has now reached Euramo, just north of Cardwell, Dimbulah west of Atherton Tablelands and around Mossman to the north of Pt Douglas.

## **Ukraine and Russia – National flowers - sunflower and chamomile – can they ever bloom in peace again?**



### **Iain Gordon is offering 3 single supered hives for sale**

Clubbie Iain Gordon is offering his 3 Nuplas hives with single supers in full operating mode with queens, brood, wax foundations and some honey up top.

Check with Iain ([iain.gordon59@gmail.com](mailto:iain.gordon59@gmail.com)) or contact **The Ed** ([trottlindsay@gmail.com](mailto:trottlindsay@gmail.com)) for a viewing or to negotiate the price.

Iain is keen for TDBAI member to get these hives and is prepared to talk turkey on a price.



### **Simon Wever is tackling his SHB outbreaks with worms**

G'day Lindsay,

Back when I submitted my member profile for the Newsletter I mentioned that I was hoping to trial inoculating the soil around my bee hive with nematodes as a form of biological control for Small Hive Beetle. Attached is the research paper that inspired this idea. The species I went for is *Steinernema carpocapsae*.

You can buy *S. carpocapsae* here: <https://goodbugshop.com.au/wordpress/product-category/nemassist/>

I went with the flea treatment just because it was the cheapest product of the right species. I completed this inoculation a month or so ago and my SHB problem is now almost non-existent. Unfortunately this is pretty bad science though because I only have 1 hive and therefore no control hive to compare to and I also did the treatment as the weather was cooling off which might have led to lower SHB numbers anyway. I wanted to pass this on in case there are others in the club that might like to try these nematodes and perhaps people with more than one hive can do a comparison with a control hive and see if we can draw any conclusions about the effectiveness of this biological control agent.

Apparently they (the nematodes) dry out very easily so I'd expect you'd at least have to be more vigilant with maintaining soil moisture in sandy soils. Have a look through the product information, they might mention soil type somewhere.

Cheers, Simon

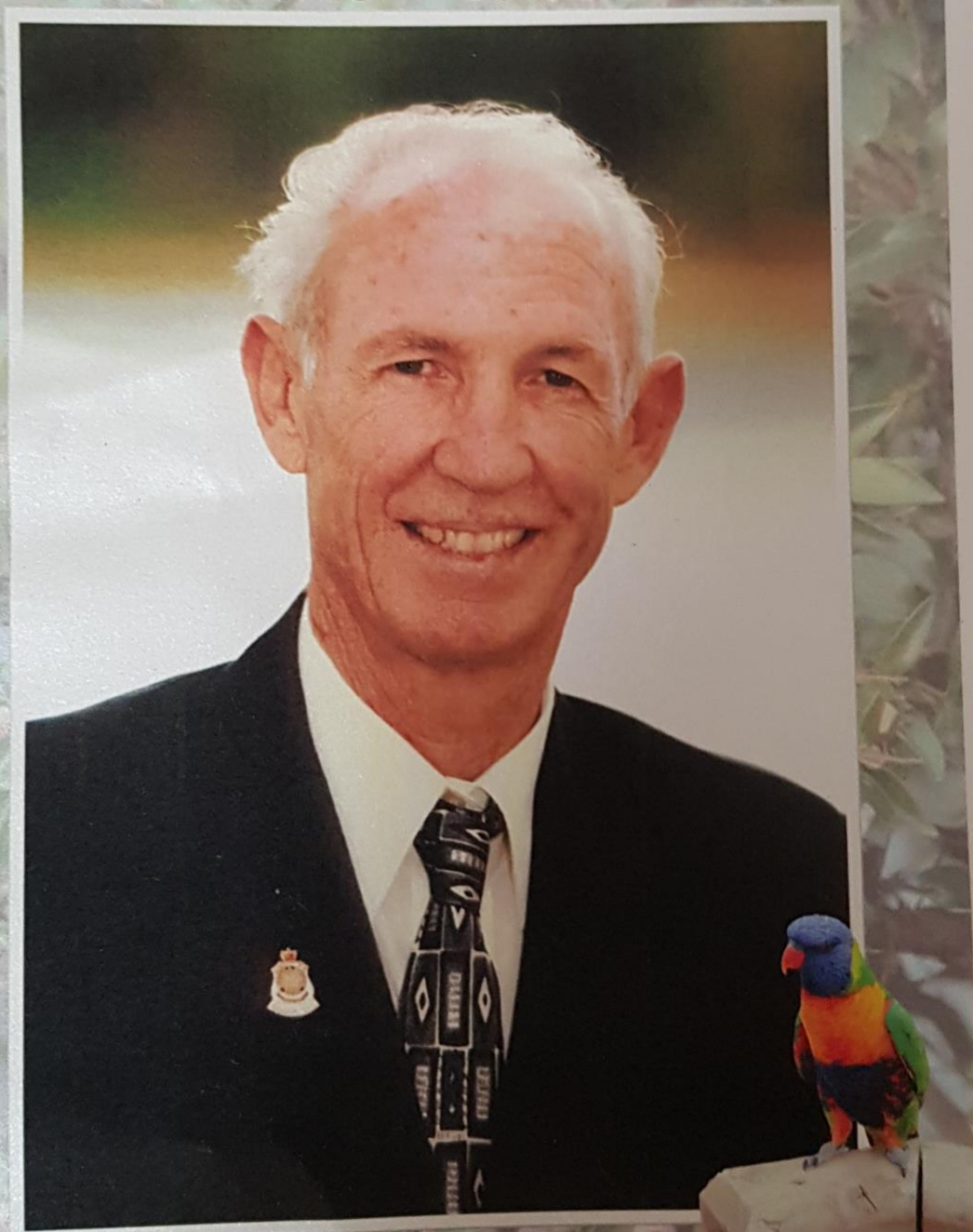
**Ed:** Thanks Simon, does anyone want to try this treatment ??? it would be great to know if it works in different soils around Townsville.

**Vale David Roberts Turnbull OAM - 8/08/1946 to 15/05/2022**

See last month's Newsletter for a short dedication to our well - respected member David.



*A Celebration Of Life*  
*David Roberts*  
*Turnbull* O.A.M  
08.08.1946 ~ 15.05.2022





## **“Beeflow” company improve crop production by giving bees pre-dinner snacks**

Article sourced from company website at: <https://www.beeflow.com>

Bees pollinate 70% of crops in the world and generate an estimated economic value of more than U\$183,000 million globally, primarily through their assistance in the production of fruits and vegetables, (source: FAO). At Beeflow we are changing the global paradigm surrounding pollination. By applying our scientific knowledge and technology, we have already proven that we are able to increase different crop yields by 20-90%.

We care about bees and their wellbeing, which is why we feed them special plant-based molecules that enhance their immune system, making them healthier and stronger. Through our conversations with farmers, we motivate them to produce food in a more sustainable way by educating them on the harm that pesticides can inflict on bees and showing them that efficient pollination works just as well, if not better, than intensive methods of agriculture. In this way, we reduce bees' exposure to harmful chemicals and also maximize resource use in order to reduce the impact of agriculture on the natural environment.

We feed our bees plant-based organic molecules that condition their memory so that they seek to pollinate specific target crops (that are usually unattractive to them for one reason or another) and are less distracted by other flowers. This substantially improves pollination of target crops.

Our feed (composed of plant-based molecules) also enhances bees' immune system and boosts their activity in stressful conditions e.g. low temperatures, allowing them to work up to 7 times more than usual. Strong and healthy bees achieve high performance pollination.



Blueberry crop pollinated with Beeflow bees compared to normal bees

Our team of agronomists visits the plots where we will provide our services in order to select strategic locations for our beehives that will maximize pollen transfer between flowers in order to improve pollination.

### **Bees on the internet**

A roundup of interesting articles on the internet about bees.

1. California Court Rules That Bees Are Fish: <https://www.beeeculture.com/california-rules-bees-are-fish/>  
Insects aren't a category protected by the California Endangered Species Act. So state officials classified four bumblebee species as fish to get them listed.
2. Honeybees used to locate dead bodies: <https://www.beeeculture.com/honey-bees-could-help-id-dead-bodies/>  
Honey bees could become the latest crime fighters to help locate the bodies of missing people. At George Mason University (GMU) in Virginia, the Honey Bee Initiative and the Forensic Science Research and Training Laboratory are teaming up to find out if the honey produced by bees can help investigators crack cold cases.

### **Remember the Shop etiquette – politeness and patience are key components to success**

To all visitors to our Club Shop – please be respectful, patient and polite to our Volunteer shopkeepers. We seem to be getting some aggressive and impolite attitudes from some customers. Please arrive with a smile, a dose of patience, and remember your manners.

*We are still in Covid-19 restrictions, please consider the welfare of all*

Email orders will be given priority and serviced – but walk in orders may not be completed.

Pre-order by email before midnight on the Thursday before shop opening

to [shop@beesnorth.com.au](mailto:shop@beesnorth.com.au); please do not send your order to [info@beesnorth.com.au](mailto:info@beesnorth.com.au)



### **Golden Rules for the Club Shop:**

Please follow this guide:

1. Order **AND Pay** by Thursday midnight **before** the opening day, by email: [shop@beesnorth.com.au](mailto:shop@beesnorth.com.au)
2. Bring you order number and print out of the request with you
3. Arrive at the Shop **after** 9:00 am, pay for your order, **don't hang around inside the Shop to chat** – too many people inside.
4. Non-emailed or late orders may not get any attention if the Shop is too busy.
5. Please take your purchases and make room for the next shoppers, thanks

### **Native bee Newsletter – join the group and check out some great info and photos**

The CROSS-POLLINATOR - Newsletter of the Australian Native Bee Association

Original articles, new information and news from the world of native bees. The Association has branches in Sydney, Brisbane, Wide Bay and Gladstone, but no Townsville branch?? Are there enough interested native beekeepers to get one “flying”?

Check out these sites: <https://australiannativebee.org.au/>

<https://www.facebook.com/Australian.Native.Bee.Association/>

<https://www.instagram.com/australiannativebeeassociation/>

## **Welcome to our New Members**

Existing Club Members are encouraged to assist/mentor our Newbees. They have joined the club to learn about bees, so even if you only have limited experience, give them a hand if you can. Invite a Newbee to your hive opening and discuss what's inside the box, let newbies experience hive openings to become more confident, and you will learn more yourself by trying to explain what's going on in there.

## **Subscribe to the Bee Aware e-newsletter and stay up to date**

The BeeAware newsletter is an e-newsletter for beekeepers and growers of pollinator-reliant crops, or anyone else simply interested in beekeeping or the pollination of crops. Each newsletter contains the latest in news, research and development, as well as upcoming events relating to honey bee biosecurity and the pollination of horticultural and agricultural crops. Townsville features in Issue 52 due to the latest AHB and Varroa incursion.

<https://beeaware.org.au/subscribe-to-newsletter/>

## **Annual Membership Fees are due in July/August each year - currently \$30/p.a.**

Membership fees can be made electronically to:

Name:- Townsville and District Beekeepers Association BSB:- 633000

Account:- 141466078

Refer :- Please make sure you add your Surname so that your membership can be signed off.

## **Email contacts for the Office Holders 2020/21**

You can use these email contacts for the Office Holders, and hopefully they will have figured out how to access them and will respond ASAP. [president@beesnorth.com.au](mailto:president@beesnorth.com.au), [treasurer@beesnorth.com.au](mailto:treasurer@beesnorth.com.au), [shop@beesnorth.com.au](mailto:shop@beesnorth.com.au),

And for all web and membership enquiries : [info@beesnorth.com.au](mailto:info@beesnorth.com.au)

## **TDBAI Office Holders for 2021/20222**

**President:** Nick Smith

**Vice President:** Mark Finn

**Secretary:** Lindsay Trott

**Treasurer:** TBA

**Treasurer's Assistant:** Frana McKinstry

**Treasurer's Assistant:** Mandy Thomas

**Membership:** Frana McKinstry : [info@beesnorth.com.au](mailto:info@beesnorth.com.au)

**Newsletter:** Lindsay Trott

**Assistant Editor:** Dr John Carr

**Librarian:** Beryl Smart

**Webmaster:** Mick Olsen/Nick Smith

**Native bees:** Nick Smith

**Committee:** Alan Ziegenfusz, Lisa Fenoglio Paul Payne, Sandylee Hutchison, Maria Finn, Dan Killoran, Doris Newitt, Naomi Olsen, Dr John Carr

## **Swarm Contact List:**

Please advise [editor@beesnorth.com.au](mailto:editor@beesnorth.com.au) if you wish to be removed from this list. Contact me with your name, phone number and suburb if you want to be added to the list.

**Kelso/Kirwan:** Steve and Carla Kersnovske - 0417 344 419

Graham Dalby – 0420951929 Michael O'Connell- 0402088080

**Douglas/ Gulliver:** Sonya Verburgt - 04 0853 0991

**Alice River/ Bluewater:** Sharene Dougall – 0415426903 Ronelle Nord – 0417752622 Duane Saltmer - 0400 339 508

Amanda Woodcock – 0405784083

**Black River through to Rollingstone:** Alex Jenkins - 0459472166

**Aitkenvale:** Pat Dury - mob 0419252829

**Charters Towers:** Mervyn Yule - 0427 124 126

Swarm List People: Please contact Biosecurity Queensland on 13 25 23 for any swarm or strange bee activity in the Townsville region. For all swarm collections, please collect 300 bees or roughly 10% of brood comb and submit to Biosecurity Queensland for pest and disease monitoring.

## **Newsletter Editor needs your input – why not tell me your story?**

### **Club Member Profiles**

From The Ed.

The Newsletter Editor receives some wonderful stories and photos from some of our Members. And it makes our Newsletter a personal and relevant method of communicating our bee adventures with to all our Members, many of whom cannot get to the meetings or events. Some of these stories are amusing – like The Bloop Series (The Ed seems to feature in a lot of these), Product Reviews, stories from the many events, markets and school visits, information from our more learned members, news about workshops and open days, and so on.

I would like to include this section in the monthly Newsletter and for this to be about a different Club member each month, but it can only happen if at least 1 out of the 400+ members puts pen to paper, takes a snapshot and sends in the info to me at the Newsletter desk.

So, how about giving it a go? You don't even have to think about what to say. You just have to write in and embellish a little, tell me funny stories, successes, failures, problems and what beekeeping means to you. Go for it!! We would love to hear what you have been up to.

The TDBAI has over 400 members at last count.

Surely one or two are prepared to fill in a half page questionnaire and take a photo? If you cant write, and cant take a photo, then give me a call and I will come over for a cuppa and a chat and we will be able to extract a story with you for the rest of our Members enjoyment. Lets keep the Club Member Profile articles for the monthly Newsletter rolling.

Here's the questionnaire – fill it out and attach a couple of photos, including one of yourself and send to me [mailto: trottlindsay@gmail.com](mailto:trottlindsay@gmail.com)

## **CLUB MEMBER PROFILE QUESTIONNAIRE**

Name /HIN /Suburb /Native or/and European bees / No of hives/area of hive locations?

Type of hives? / Type of foundation? /Beetle protection?

Year commenced beekeeping? /Who was your mentor? /Who is involved in your household? Is anyone allergic/sensitive to stings?

What has been your biggest success? / failure?/ mistake?/ biggest lesson?

What would you do differently if you had to start beekeeping again after a disaster like fire/AFB/Varroa/cyclone

Do you sell/barter/give away honey? How much honey does your average hive produce? Do you make any other products from your hives?

Do you volunteer for the Club at Open days, markets, school events, public displays? Would you like to participate?

Any stories you would like to tell?

Attach photo please?

**That's it!!!! Just fill it out and send it to me, and you will be a rock star in the Monthly Newsletter.**

**Please provide more than just a one word answer!!**

The Ed

### **TDBA Bee Starter Kit - \$160**

*The Perfect Gift for a budding Beekeeper*

*Available in Townsville from the Club Shop:*

**Club Members Price Only! - \$160**

*Hive tool, brush, vented jacket/veil, gloves, and smoker*

Plus: The ABC of Beekeeping book



**Contact:** [shop@beesnorth.com.au](mailto:shop@beesnorth.com.au)



Townsville & District

# **BEEKEEPERS**



ASSOCIATION